



KANOMAX
The Ultimate Measurements

Smart CTA

Model 7250

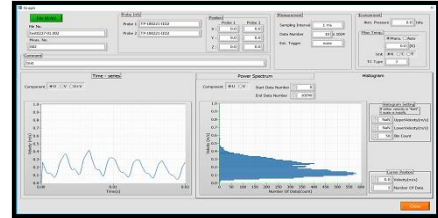
Professional and Compact Hot-Wire Anemometer with an Excellence of Analog Circuit !!



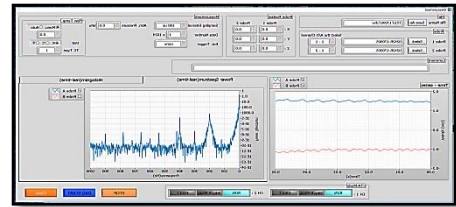
Smart CTA system

<System Configuration Example>

- Smart CTA Main Unit
- Probe
- Probe Support and Cable
- Interface (Expansion Chassis, A/D, DI, Thermocouple input module)
- PC
- Software



<software example>
time-series variation and velocity histogram (with an I-type probe)



<software example>
time-series variation and frequency (with a X-type probe)

Features:

- 2 channels of CTA integrated in one unit, extended up to 16 channels
- Compact and Easy to Use
- Frequency response max. 20 kHz
- Exclusive software supports from probe calibration to measurement
- Responsiveness optimization possible with integrated square wave generator

Applications:

- Airflow investigation in wind tunnel
- Investigation or measurement of airflow turbulence of fan-casings, buildings etc.
- Investigation on noise generated by airflow

Specifications (Main Unit):

Method	Constant Temperature Anemometry (CTA)	
Bridge	Channel Number	2
	Bridge Ratio	12:1
	Set Resistance (for probe)	4.5~45Ω
	Current Supply to Probe	< 350mA
Feedback Circuit	Output Voltage Range	0~10V DC
	Frequency Response	< 20kHz
Operating Environment	5~35°C 20~90%RH *w/o condensation	
Power Supply	AC100/120/220/240V 50/60Hz (set prior to delivery)	
Dimension	320x88x280mm	
Weight	approx. 3.8kg	

Smart CTA main unit



Kanomax JAPAN, INC.

Fluid Research Measurement Solutions Division

2-1 Shimizu, Suita City, Osaka 565-0805 JAPAN

TEL: +81-6-6877-8679 E-mail: fluids@kanomax.co.jp

<https://www.kanomax.co.jp>

Information, data and specifications in this brochure are subject to change without notice.

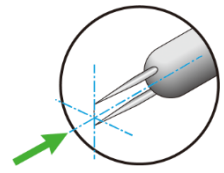
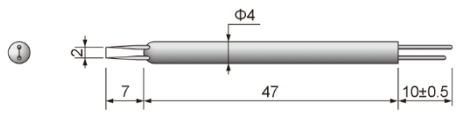


※ dimension is in "mm"
 ※ one set of each type contains 6 probes, while platinum film probe is sold as 1 piece.
 ※ no tester to be used for probe resistance measurement, which causes breakdown
 ※ please inquire for request on other prong length or dimension

Probes

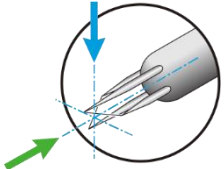
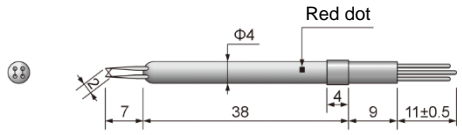
General Purpose Single Probe

- 0251R-T3.1 (φ 3.1μm Tungsten)
- 0251R-T5 (φ 5μm Tungsten)
- 0251R-PI5 (φ 12μm Platiniridium)
- 0251R-P25 (φ 25μm Platinum)
- 0251R-FP50 (φ 50μm Platinum Film)



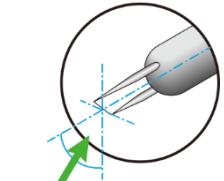
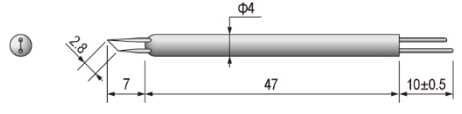
End Flow X Probe

- 0252R-T5 (φ 5μm Tungsten)
- 0252R-FP50 (φ 50μm Platinum Film)



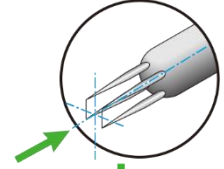
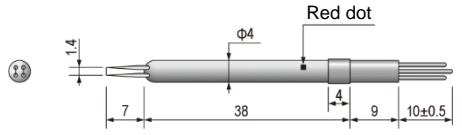
45°Slanting Sensor Probe

- 0253R-T5



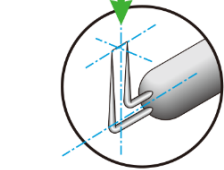
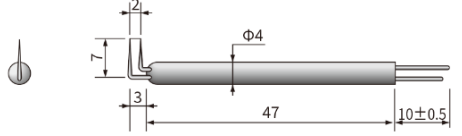
End Flow Parallel Sensor Probe

- 0254R-T5



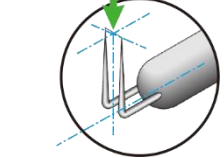
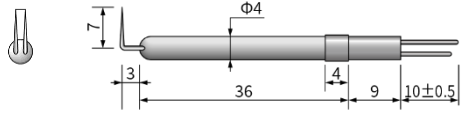
90°Parallel Sensor Probe

- 0247R-T5



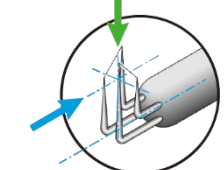
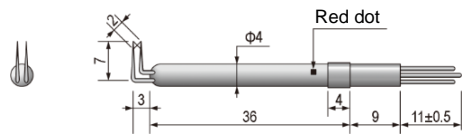
90°Perpendicular Sensor Probe

- 0248R-T5



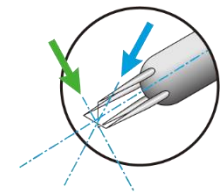
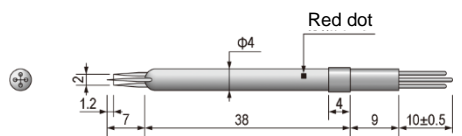
90°Cross Flow X Probe

- 0249R-T5



Standard Cross Flow X Probe

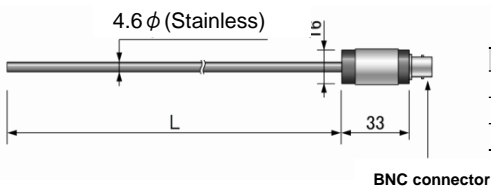
- 0250R-T5 (φ 5μm Tungsten)
- 0250R-PI5 (φ 12μm Platiniridium)
- 0250R-P25 (φ 25μm Platinum)
- 0252R-FP50 (φ 50μm Platinum Film)



→ green arrow: U-component
 → blue arrow: V-component

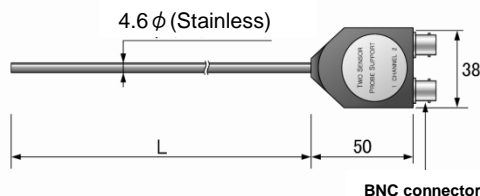
Supports

MODEL 0102 · 0103 · 0104



Model	Length
0102	155mm
0103	459mm
0104	917mm

MODEL 0106 · 0107 · 0108



Model	Length
0106	147mm
0107	451mm
0108	909mm