



KANOMAX
The Ultimate Measurements

MODEL.6715
DATA ACQUISITION SOFTWARE
INSTRUCTION MANUAL



01001

1406

Note:

1. Specifications and the related details in this manual will be subject to change along with the software version upgrade.
2. Working principle: one software corresponding to one PC.

TABLE OF CONTENTS

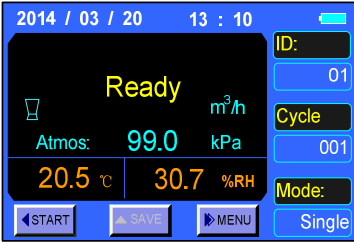

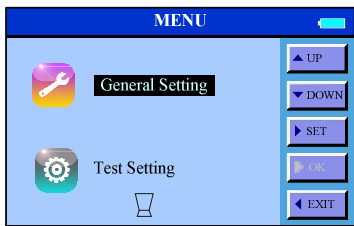

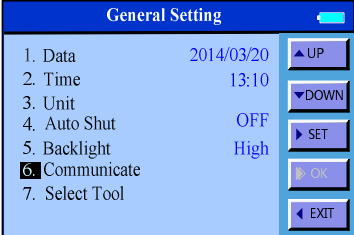

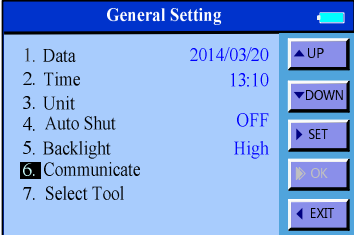

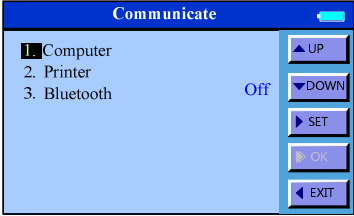

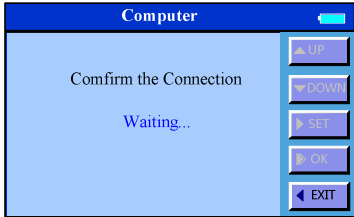
1. SUMMARY	4
2. Software installation:	6
3. How to use the software	9
3.1 Start	9
3.2 Data download	10
3.3 Data Hiding	12
3.4 Flow Unit switch	12
3.5 Differential Pressure unit switch:	13
3.6 Velocity unit switch:	13
3.7 Temperture unit switch:	14
3.8 Atmosphere unit switch:	14
3.9 Data Save	15

1. SUMMARY

This manual explains how to upload the data with the computer software. The data stored in the flash memory will be read and transferred, including: Air flow rate, Differential pressure, Velocity, Temperature, Humidity, Atmosphere, and so on. Then these records will be saved in Microsoft office Excel (*.CSV) compatible file format.

Instrument settings:

1) Communication settings

Display Shows	Operating Key	Explanation
		Press "POWER" to enter the main interface.
		Press and hold for 2 seconds to enter "MENU".
		Select option "General Setting" and press "SET"
		Under "General Setting", press "DOWN" to enter the "Communicate"
		Under "Communicate", press "SET" to enter the "Computer"
	<p>The display will then indicate: "Confirm the Connection Waiting..."</p>	

2) Connection illustration for reference:

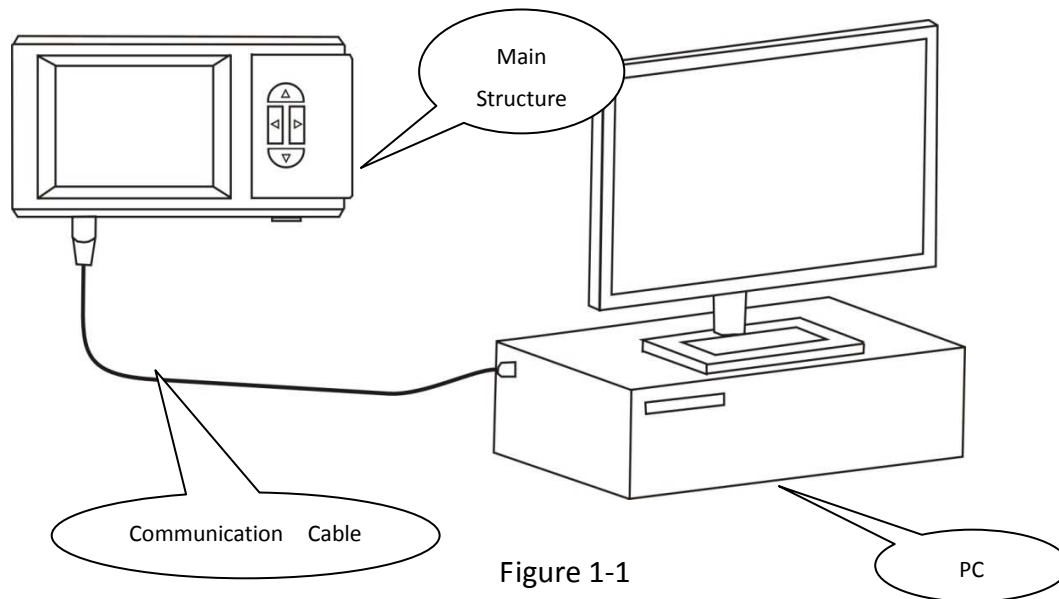


Figure 1-1

3) Software support:

Item	content
Operating system	Microsoft Windows XP, Microsoft Windows7
Language	English or Simplified Chinese
Communication	USB connection with PC

4) PC configuration request:

- .CPU IBM PC compatible machine with CPU Pentium II or above
- .Interface 1 USB port
- .Operating system Microsoft Windows XP, Microsoft Windows7
- .RAM $\geq 512\text{MB}$
- .HDD $\geq 1\text{GB}$ free disc space
- .Corresponding model: 6715

2. Software installation:

1) It's recommended that you turn off other application programs before the installation. Insert the CD-ROM into the disk driver. Then open



the folder  ,and double click  to begin the installation. The screen shown in Figure2-1 will appear. Press "Next".



Figure2-1

2) Then the screen shown in Figure2-2 appears. Press "Next"after you select a folder to install this software.

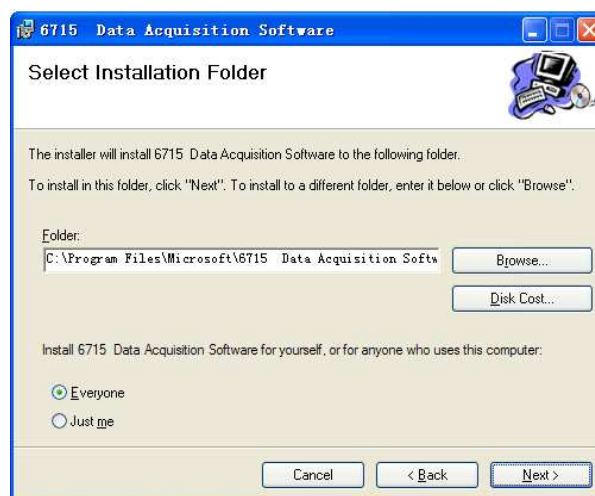


Figure2-2

3) Then the screen shown in Figure2-3appears. Press “Next”to start the installation.

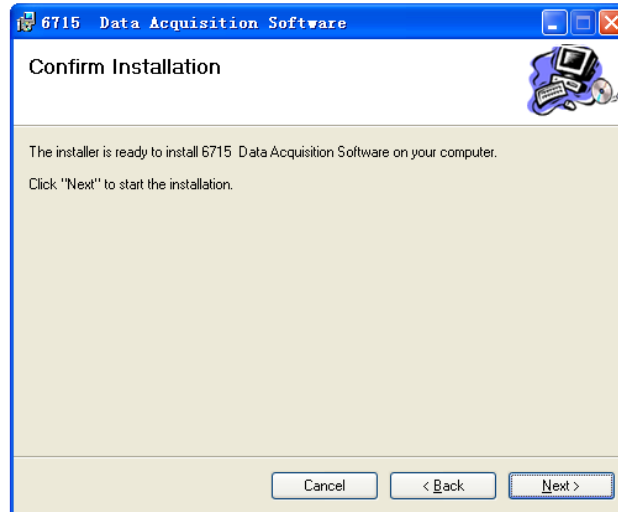


Figure2-3

4) Wait until the installation finishes, as shown in Figure 2-4.

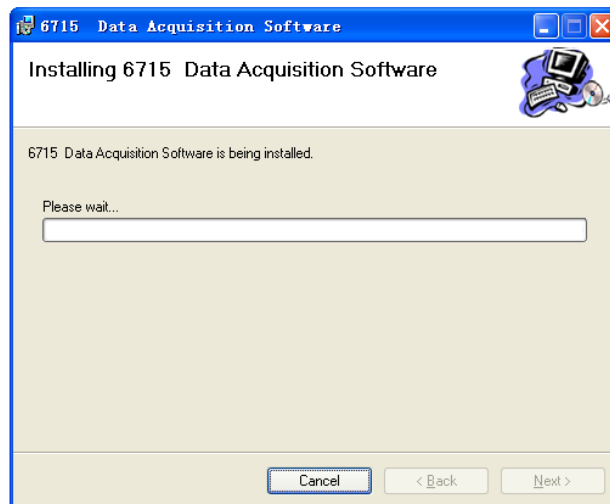


Figure 2-4

5) When the screen shown in Figure 2-5 appears,press “Close”.

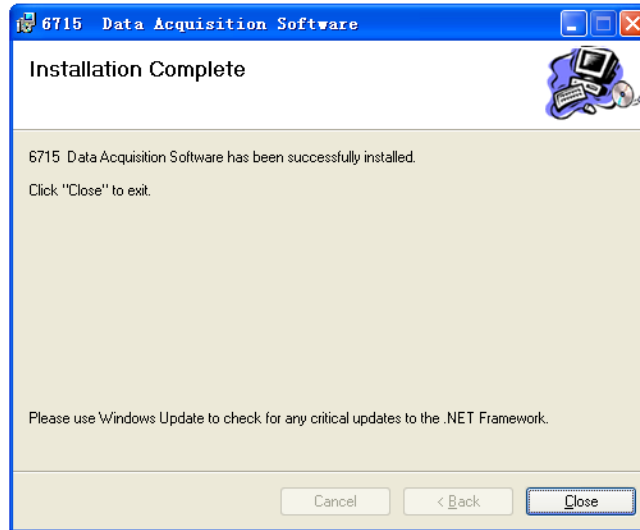


Figure2-5

6) After clicking“Close”, the icon shown in Figure 2-6 will be displayed on the screen indicating installation was successful.



Figure 2-6

3. How to use the software

3.1 Start



Double click the icon to start the data reading software. A sample of the opening software screen is shown for reference:

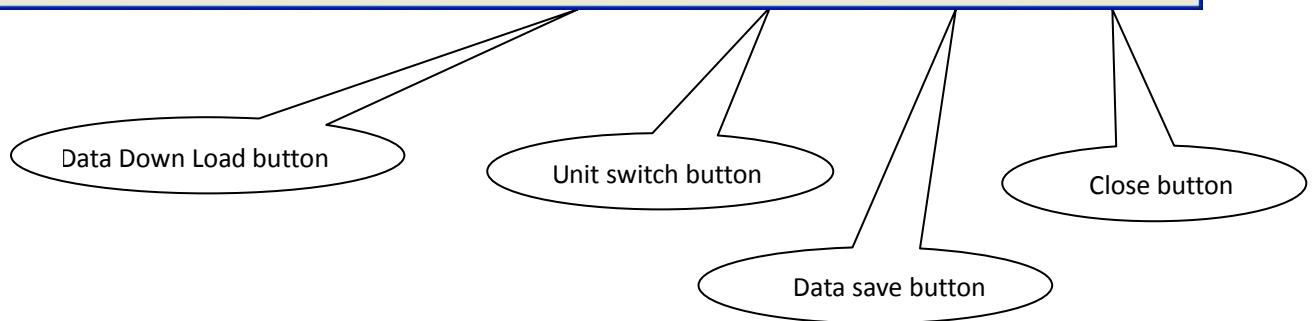
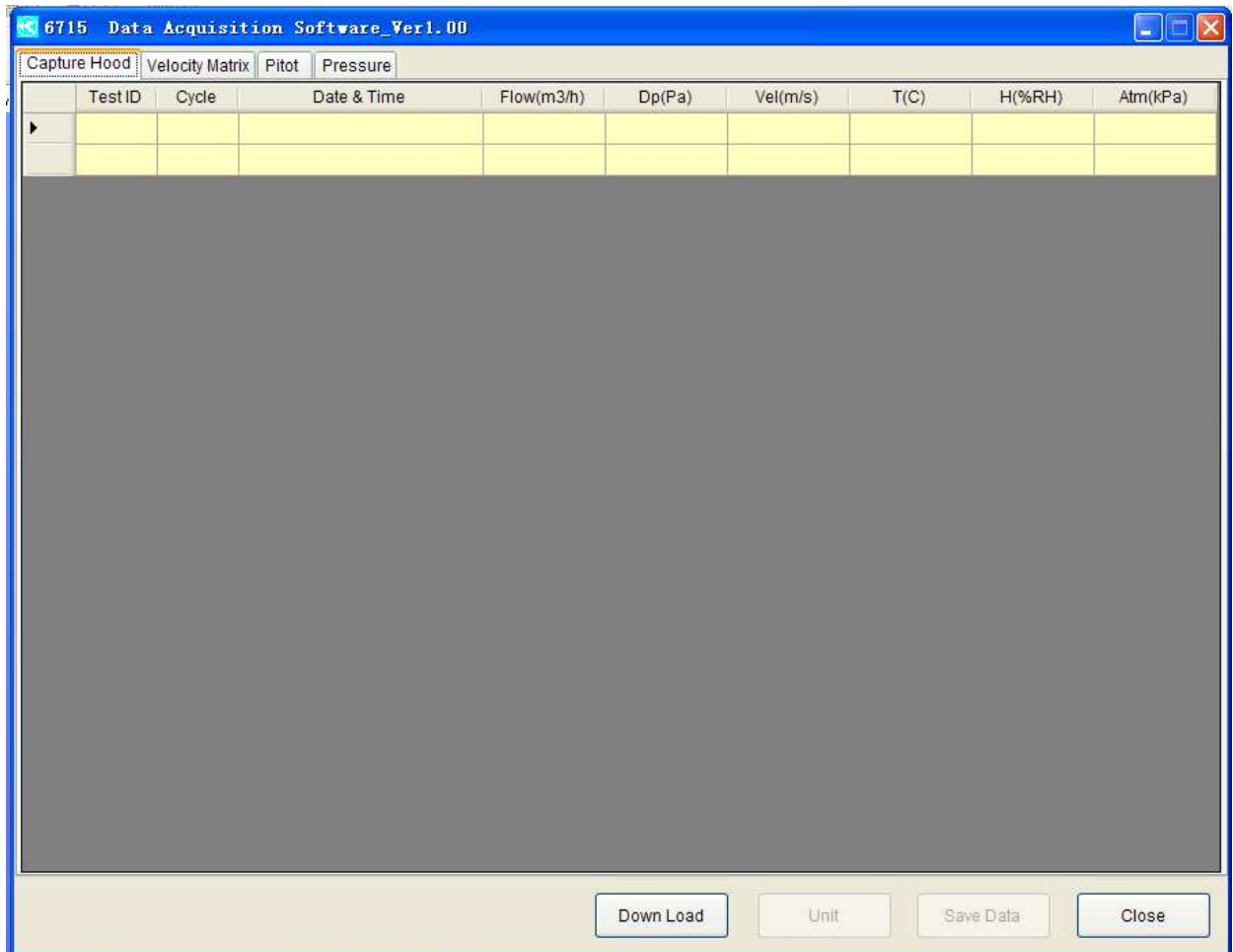
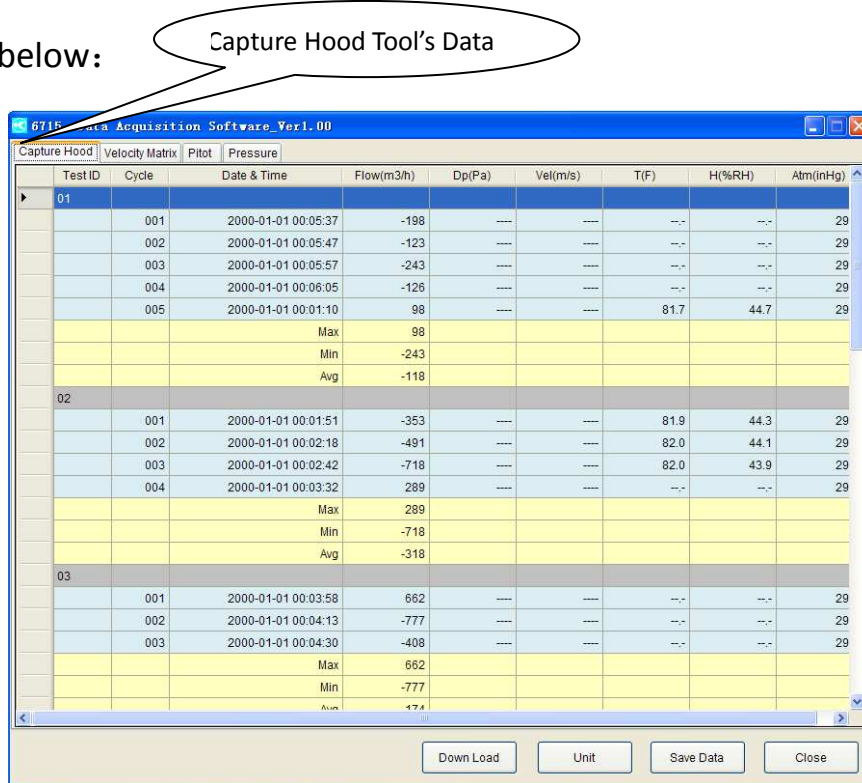


Figure 3-1

3.2 Data download

Connect a USB cable, click **【Down Load】** and the display will change as shown below:



Velocity Matrix Tool's Data **Figure 3-2**

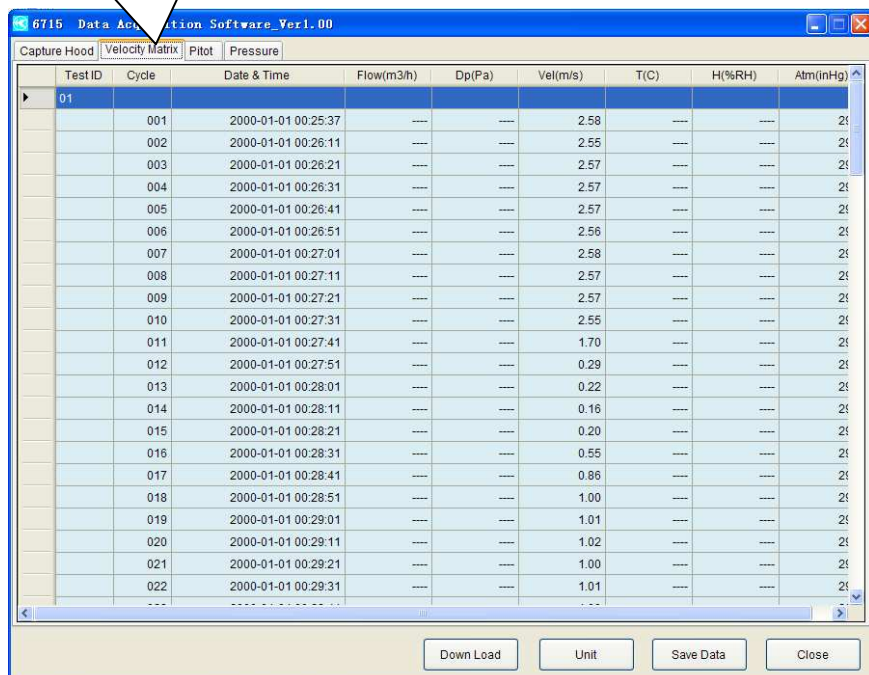


Figure 3-3

Pitot Tool's Data

TestID	Cycle	Date & Time	Flow(m3/h)	Dp(Pa)	Vel(m/s)	T(C)	H(%RH)	Atm(inHg)
01								
	001	2000-01-01 00:37:59	---	---	0.00	---	---	29
	002	2000-01-01 00:38:09	---	---	0.00	---	---	29
	003	2000-01-01 00:38:19	---	---	0.00	---	---	29
	004	2000-01-01 01:07:02	---	---	57.9	---	---	29
	005	2000-01-01 01:07:06	---	---	57.9	---	---	29
	006	2000-01-01 00:00:14	0	---	0.00	---	---	29
	007	2000-01-01 00:00:35	99	---	0.11	---	---	29
	008	2000-01-01 00:00:56	0	---	0.00	---	---	29
	009	2000-01-01 00:01:19	102	---	0.11	---	---	29
	010	2000-01-01 00:01:45	0	---	0.00	---	---	29
	011	2000-01-01 00:01:55	95	---	0.10	---	---	29
	012	2000-01-01 00:02:33	---	---	0.11	---	---	29
	013	2000-01-01 00:02:56	---	---	0.00	---	---	29
	014	2000-01-01 00:03:26	---	---	0.12	---	---	29
	015	2000-01-01 00:03:36	-32767	---	-0.16	---	---	29
	016	2000-01-01 00:03:46	-32767	---	-0.15	---	---	29
	017	2000-01-01 00:03:56	---	---	0.00	---	---	29
	018	2000-01-01 00:04:06	---	---	0.00	---	---	29
	019	2000-01-01 00:04:16	---	---	0.12	---	---	29
	020	2000-01-01 00:04:26	-32767	---	-0.14	---	---	29
	021	2000-01-01 00:04:36	---	---	0.00	---	---	29
	022	2000-01-01 00:04:46	---	---	0.32	---	---	29

Figure 3-4

Pressure Tool's Data

TestID	Cycle	Date & Time	Flow(m3/h)	Dp(inH2o)	Vel(m/s)	T(C)	H(%RH)	Atm(inHg)
01								
	001	2000-01-01 00:24:14	---	0.00000	---	---	---	29
	002	2000-01-01 00:25:06	---	-0.0298	---	---	---	29
	003	2000-01-01 00:28:13	---	0.00000	---	---	---	29
	004	2000-01-01 00:28:23	---	0.00000	---	---	---	29
	005	2000-01-01 00:28:33	---	0.00000	---	---	---	29
	006	2000-01-01 00:28:43	---	0.00000	---	---	---	29
	007	2000-01-01 00:28:53	---	0.00006	---	---	---	29
	008	2000-01-01 00:29:03	---	0.00000	---	---	---	29
	009	2000-01-01 00:29:09	---	-0.00012	---	---	---	29
	010	2000-01-01 00:31:15	---	-0.0602	---	---	---	29
	011	2000-01-01 00:32:38	---	-5.12	---	---	---	29
	012	2000-01-01 00:33:46	---	20.08	---	---	---	29
	013	2000-01-01 00:36:20	---	0.0392	---	---	---	29
	014	2000-01-01 00:36:42	---	0.00289	---	---	---	29
	015	2000-01-01 00:36:59	---	-0.0271	---	---	---	29
	016	2000-01-01 00:37:17	---	-0.0101	---	---	---	29
	017	2000-01-01 00:40:52	---	0.00000	---	---	---	29
	018	2000-01-01 00:41:43	---	0.00000	---	---	---	29
			Max	20.08				
			Min	-5.12				
			Avg	0.826				
02								

Figure 3-5

3.3 Data Hiding

Double click the gray area for hiding the small ID data,so you can easy see the bigger ID data.

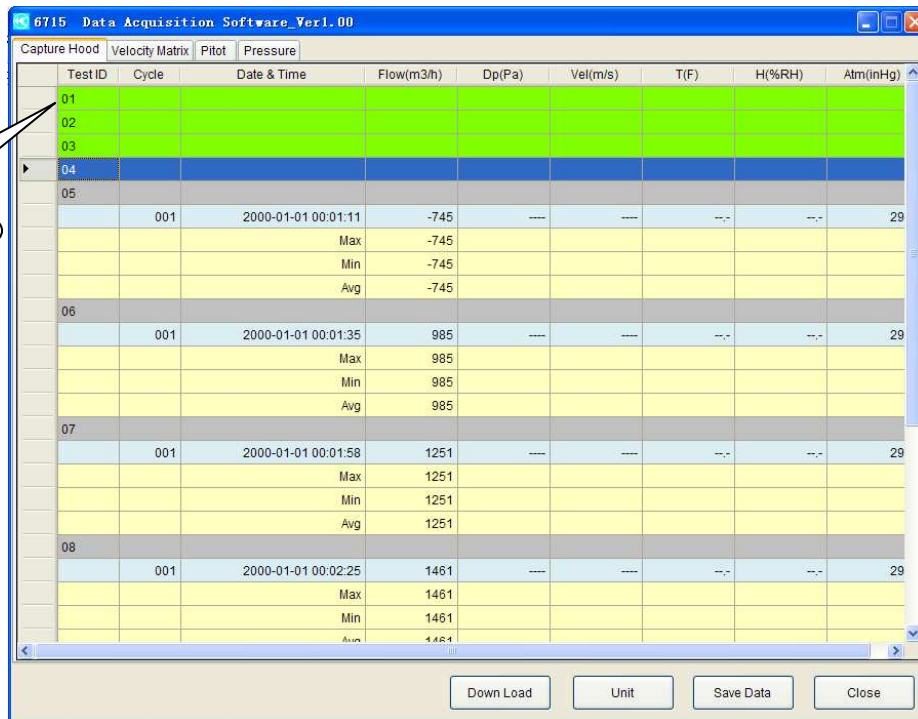


Figure 3-6

3.4 Flow Unit switch

Click **Unit** to change the displayed unit and the following box will appear:

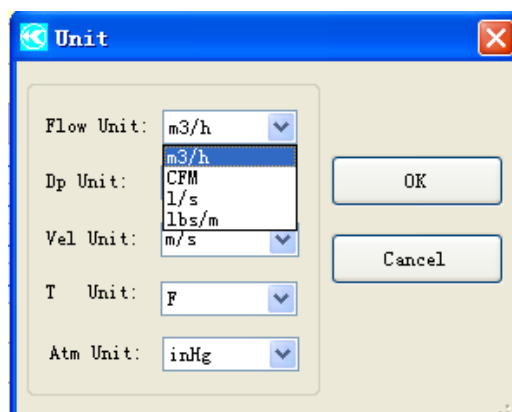


Figure 3-7

3.5 Differential Pressure unit switch:

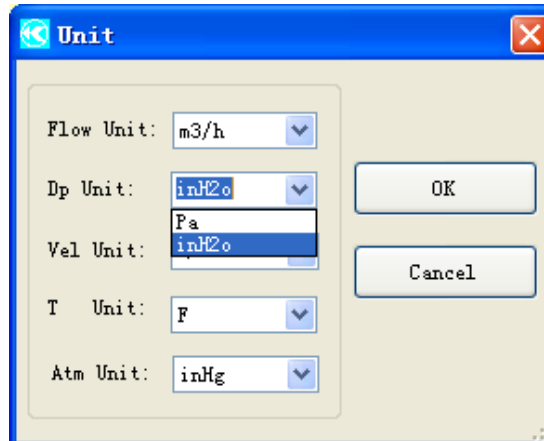


Figure 3-8

3.6 Velocity unit switch:

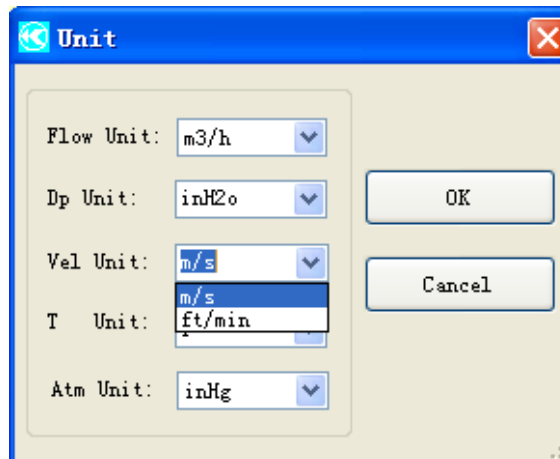


Figure3-9

3.7 Temperture unit switch:

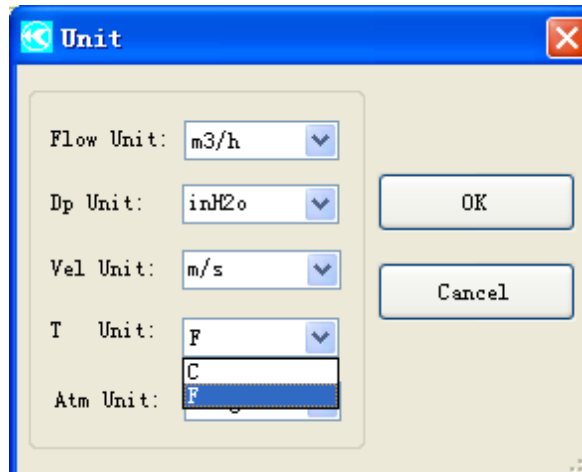


Figure3-10

3.8 Atmosphere unit switch:

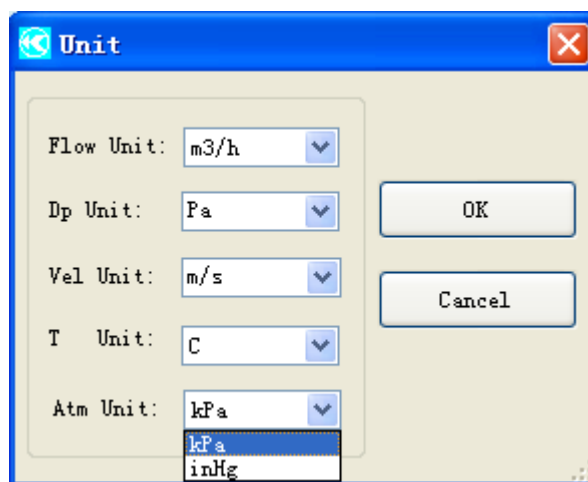


Figure3-11

3.9 Data Save

Click **【Save Data】** to save Capture Hood Tool's data and the following box will appear:

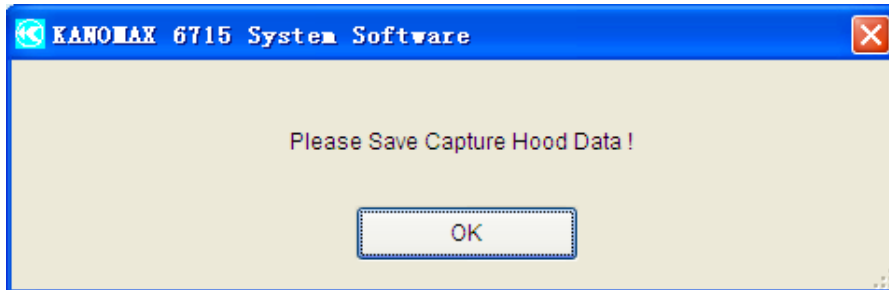
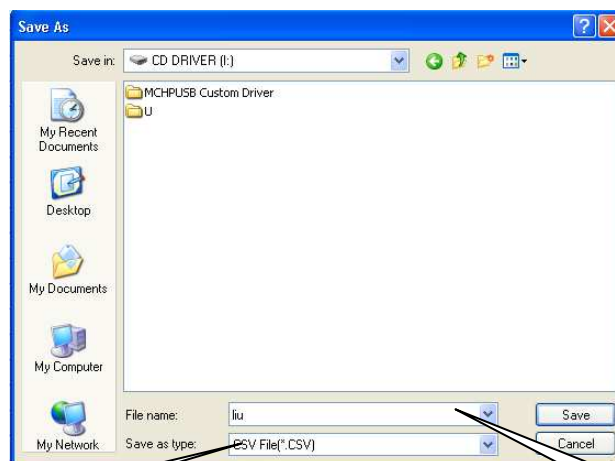


Figure3-12

You will be prompted to choose a location to save the data to as shown figure 3-13 below. Select a file name and location then click save to finish saving the data.



EXCEL file layout

Figure 3-13

File name

Then please save the Velocity Matrix Tool's data if the tool has data and the following box will appear:

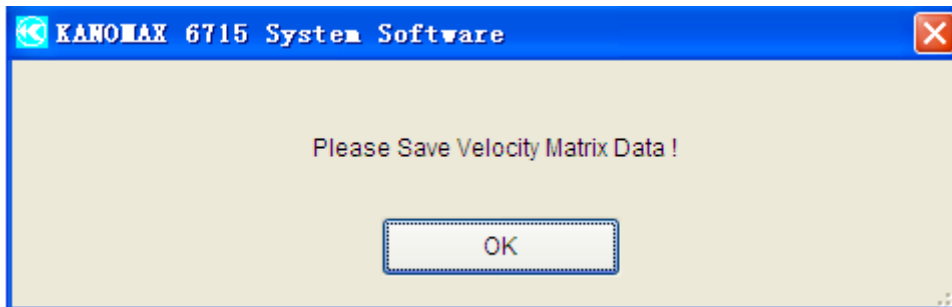


Figure 3-14

You will be prompted to choose a location to save the data to as shown figure 3-15 below. Select a file name and location then click save to finish saving the data.

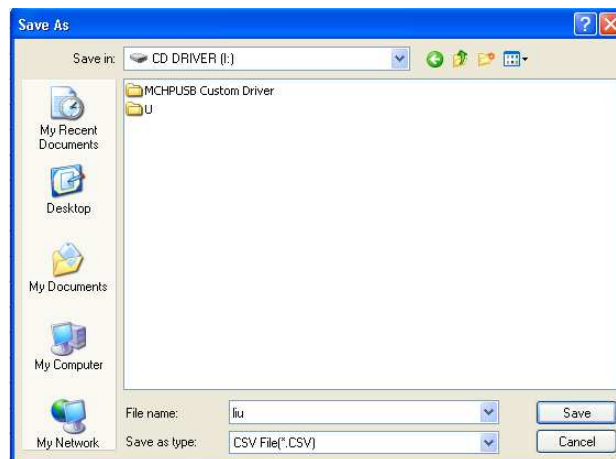


Figure 3-15

Then please save the Pitot Tool's data if the tool has data and the following box will appear:

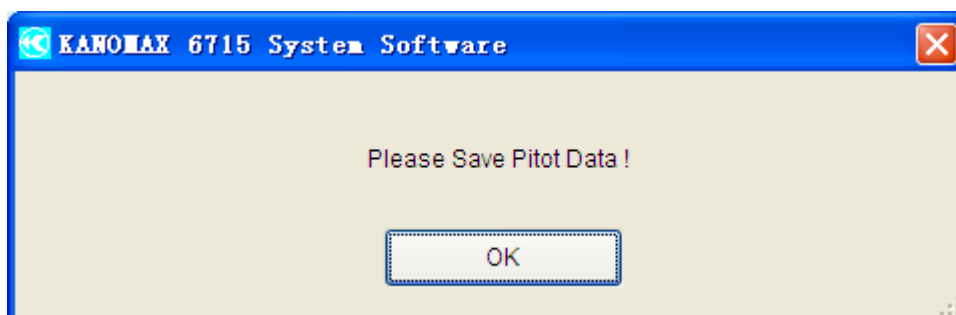


Figure 3-16

You will be prompted to choose a location to save the data to as shown figure 3-17 below. Select a file name and location then click save to finish saving the data.

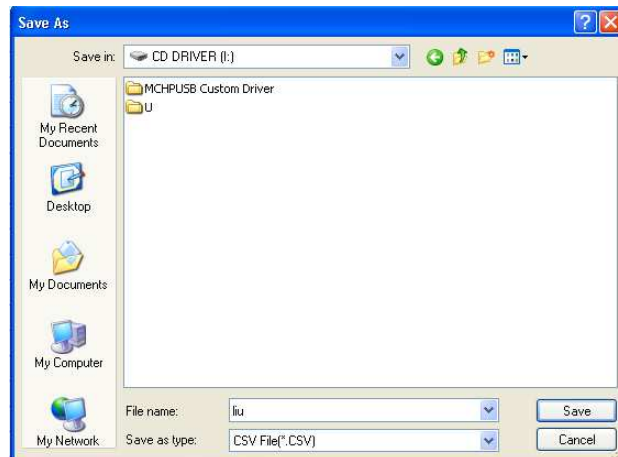


Figure 3-17

Then please save the Pressure Tool's data if the tool has data and the following box will appear:

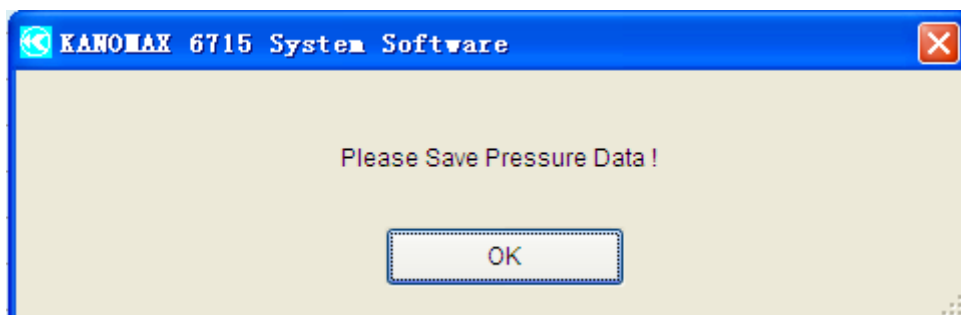


Figure 3-18

You will be prompted to choose a location to save the data to as shown figure 3-19 below. Select a file name and location then click save to finish saving the data.

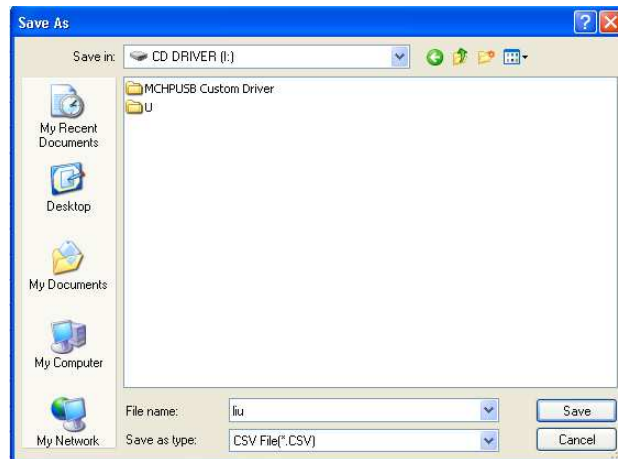


Figure 3-19