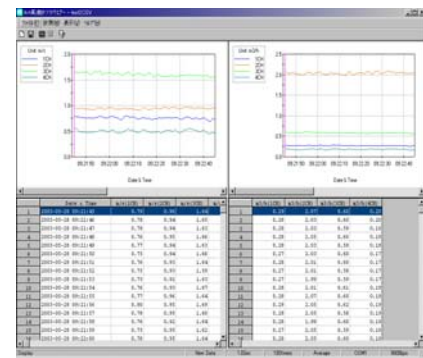


4 Channel Anemomaster Model 1570

System 6244



***Product Efficiency
Control
Ventilation Testing
IAQ Investigation
Cleanroom***



Features:

- 4CH simultaneous measurement in a compact body.
- Comes with Windows compatible measurement software.
- Wide probe selection available for various applications.
- Capable of taking measurements at high-time-resolution (0.1 sec)
- RS232C terminal for data logging.
- Analog output from each channel.

Benefits:

- Each channel display can be easily switched over by a touch of a button.
- Probe compatibility saves your downtime and shipping cost.
- Windows software gives you simultaneous measurement on air velocity and flow rate.
- Measurement data saved in text format for easy processing using other software such as Excel.

Main Body Specifications

		Metric	Imperial
Model		1570	
Measuring Object		Clean airflow	
Measuring Range		Please refer chart below	
Display Resolution		0-9.99m/s : 0.01m/s Above 10m/s: 0.1m/s	1 fpm
Display		LCD display	
Data Transfer	Burst Mode	Transfers data of all channels.	
	Channel Mode	Transfers data of specific channel only.	
Software Function	Instant Mode	Displays instantaneous values every specified sampling time.	
	Average Mode	Displays average values of a specified sampling time.	
Output	Digital	RS-232C (Baud rate 9600bps fixed)	
	Analog	0-5V	
Main Body Operation Temperature		5-40C	41-104F
External Dimensions		200 x 260 x 70 mm	7.8 x 10.2 x 2.8 in
Weight		Approx. 2.6 kg	5.7 lbs
Power Supply		AC85V – 276V 50Hz/60Hz	
Standard Kit		Operation manual, RS-232C cable , Power cable, 2 × Fuse, Data Processing Software	

* Please specify Metric or Imperial at the time of order.

Probe Specifications

		0962-00 / 0963-00	0964-01 / 0964-02	0965-00/01/03/04/07/08
Accuracy	Metric	0.1-4.99m/s: +/-0.1m/s 5.00-9.99m/s: +/-0.2m/s 10.0-24.9m/s: +/-0.5m/s 25.0-50.0m/s: +/-1.0m/s	0.1-4.99m/s: +/-0.15m/s 5.00-9.99m/s: +/-0.3m/s 10.0-24.9m/s: +/-0.75m/s 25.0-50.0m/s: +/-1.5m/s	0.1-4.99m/s: +/-0.15m/s 5.00-9.99m/s: +/-0.3m/s 10.0-25.0m/s: +/-0.60m/s
	Imperial	20-1000fpm: +/-20fpm 1000-2000fpm: +/-40fpm 2000-5000fpm: +/-100fpm 5000-10000fpm: +/-200fpm	20-1000fpm: +/-30fpm 1000-2000fpm: +/-60fpm 2000-5000fpm: +/-150fpm 5000-10000fpm: +/-300fpm	20-1000fpm: +/-30fpm 1000-2000fpm: +/-60fpm 2000-5000fpm: +/-120fpm
Temperature Compensation		5-80C (41-176F)		
Response Time*		Approx. 1 sec	Approx. 3 sec	Approx. 7 sec

* At 1m/s, 90% response.



CAUTION

For safe and trouble-free operations, please read Operation Manual carefully before using the instrument.



Kanomax Japan, Inc.
2-1 Shimizu, Suita, Osaka
565-0805, JAPAN
TEL: +81-6-6877-0183
FAX: +81-6-6877-5570
E-mail: sales@kanomax.co.jp
URL: www.kanomax.co.jp

Kanomax USA, Inc.
P.O. Box 372, 219 Route 206
Andover N.J. 07821 U.S.A.
TEL: 1-800-247-8887
+ 1-973-786-6386
FAX: +1-973-786-7586
E-mail: info@kanomax-usa.com
URL: www.kanomax-usa.com

Shenyang Kano Scientific Instrument Co., Ltd
No. 12, 4 Jia Wencui Road Heping District
Shenyang City PRC
TEL: +86-24-23845309
FAX: +86-24-23898417
E-mail: sales@kanomax.com.cn
URL: www.kanomax.com.cn

Specifications subject to change without prior notice.